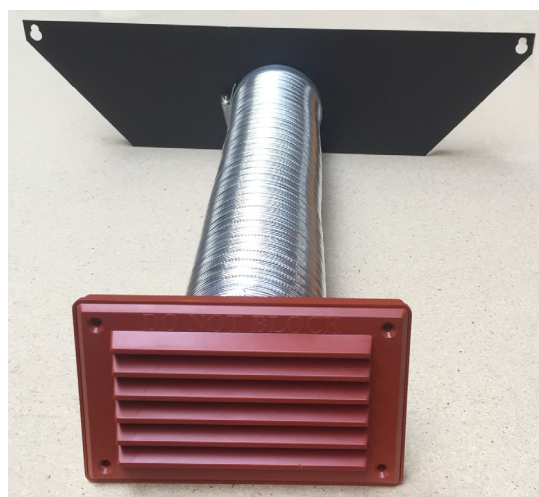


Instructions for fitting the **external air supply kit** on the Avance 400 and 500 stoves

The outside air supply kit is available as an extra item which brings air to the rear of the stove from outside the building, please follow all current building regs regarding doc j.

- The diameter of the tube is equal to 4187 sq. mm.
- The position of the louvre grill on the outside wall should be installed so as to not be affected by severe weather conditions.
- Maintenance, regularly check for any obstructions of the outside air grill.
- Parts included are:
 - 1 x 800mm flexi aluminium tube
 - 1 x outside air louvre grill
 - 1 x conversion adapter to fit stove
 - 2 x jubilee clips
 - 4 x screws + wall plugs



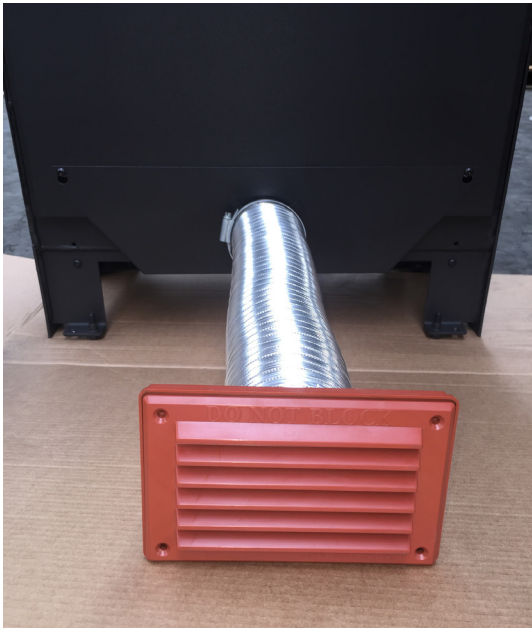
Fitting of the outside air kit

- 1.** Loosen the 2 screws at the bottom of rear heat shield with a 4mm allen key by 2 turns, do not remove.



- 2.** Locate the bottom of the adapter with the 2 bends under the bottom rear of the stove which will locate and secure the bottom part of the adapter, align the 2 key holes on the adapter with the 2 screws on the back of stove which was loosened above and fasten 2 screws up tight.

You can now connect the flexi tube onto the spigot of the louvre grill with a jubilee clip.



3. From the hearth level to the centre of the outside air intake spigot on the stove is;
Avance 500 tall is 140mm
Avance 500 short 70mm
Avance 400 is 110mm
With the 3" / 76mm hole pre-cut through the outside wall you can now push the flexi tube through the hole from the outside and fasten the grill onto the outside wall with 4 screws

4. With the flexi tube now through the wall you can push on to end of spigot on stove and fasten the jubilee clip. Don't forget to secure the stove on to the hearth with the 2 holes provided at the rear of the stove to stop it moving with the flexi tube attached.



5. You can now continue to follow the instruction manual to complete your installation of the Avance 400/500.